

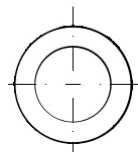
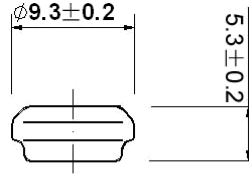
TELONG ENERGY TECHNOLOGY CO., LTD.

Anjia Industrial Zone, HuanGuan South Road, GuanLan Town, ShenZhen City, GuangDong Province, China

TEL:+86-755-29052355 FAX:+86-755-27981742 E-mail:telongbattery@sztlg.com <http://www.sztlg.com>

30H1A Ni-MH BUTTON CELL

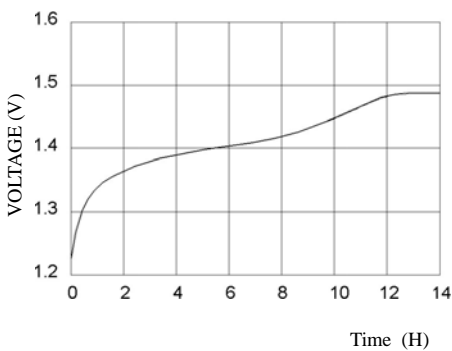
TECHNICAL DATA



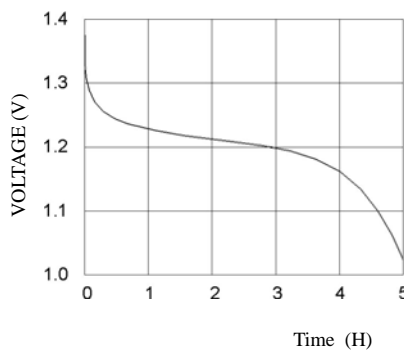
Model	Voltage	Capacity	Recommended Trickle Charge Current	Nominal Charge Current	Normal Charging Time	Nominal Discharge Current	Weight
30H1A	1.2V	25mAh	0.8~1.3mA	2.5mA	14~16h	5mA	1.7g

TECHNICAL CHARACTERISTICS

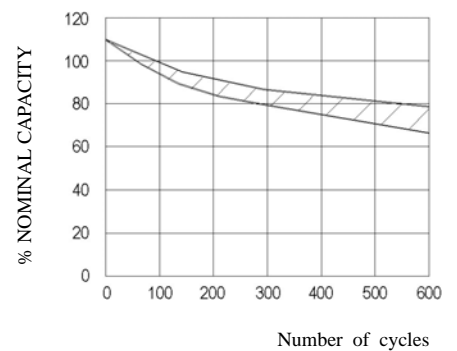
TYPICAL CHARGE CURVE (2.5mA)



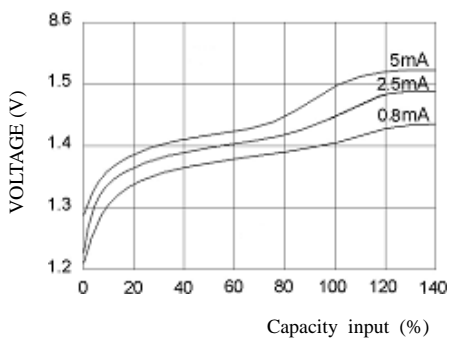
TYPICAL DISCHARGE CURVE (5mA)



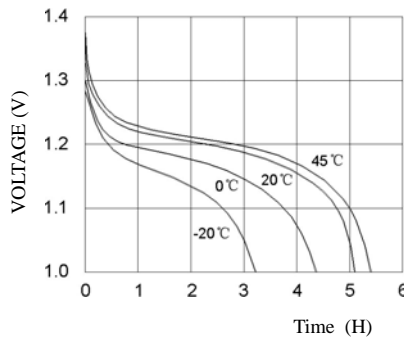
CYCLE LIFE CURVE



TYPICAL CHARGE CURVE AT VARIOUS CURRENTS



DISCHARGE CURVE AT VARIOUS TEMPERATURES (5mA)



SELF DISCHARGE RATE AT VARIOUS TEMPERATURES

