

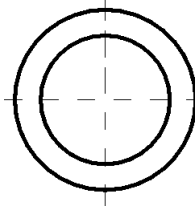
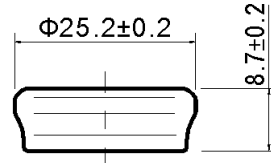
TELONG ENERGY TECHNOLOGY, CO LTD.

Anjia Industrial Zone, HuanGuan South Road, GuanLan Town, ShenZhen City, GuangDong Province, China

TEL:+86-755-29052355 FAX:+86-755-27981742 E-mail:telongbattery@sztlg.com <http://www.sztlg.com>

350H1A Ni-MH BUTTON CELL

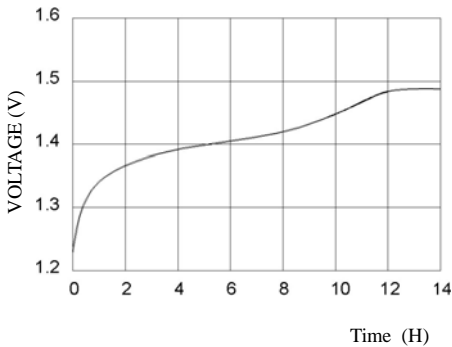
TECHNICAL DATA



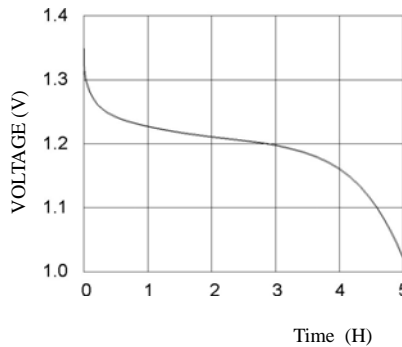
Model	Voltage	Capacity	Recommended Trickle Charge Current	Nominal Charge Current	Normal Charging Time	Nominal Discharge Current	Weight
350H1A	1.2V	350mAh	10.6~17.5mA	35mA	14~16h	70mA	12.0g

TECHNICAL CHARACTERISTICS

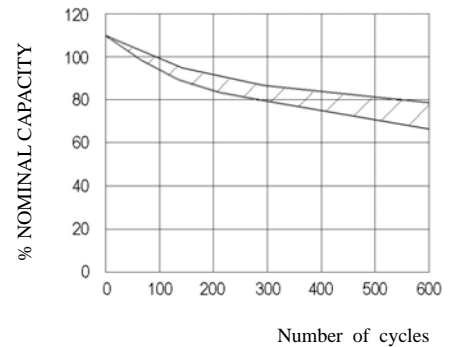
TYPICAL CHARGE CURVE (35mA)



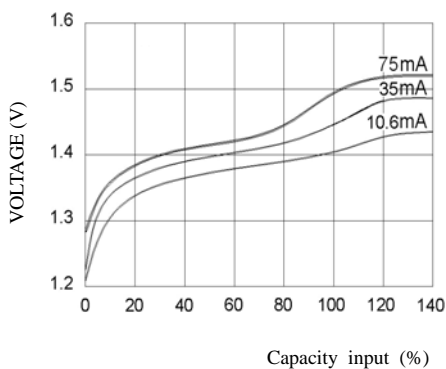
TYPICAL DISCHARGE CURVE (70mA)



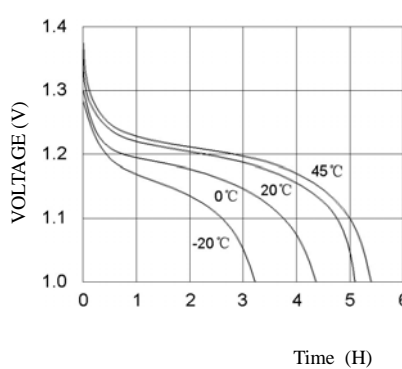
CYCLE LIFE CURVE



TYPICAL CHARGE CURVE AT VARIOUS CURRENTS



DISCHARGE CURVE AT VARIOUS TEMPERATURES (70mA)



SELF DISCHARGE RATE AT VARIOUS TEMPERATURES

